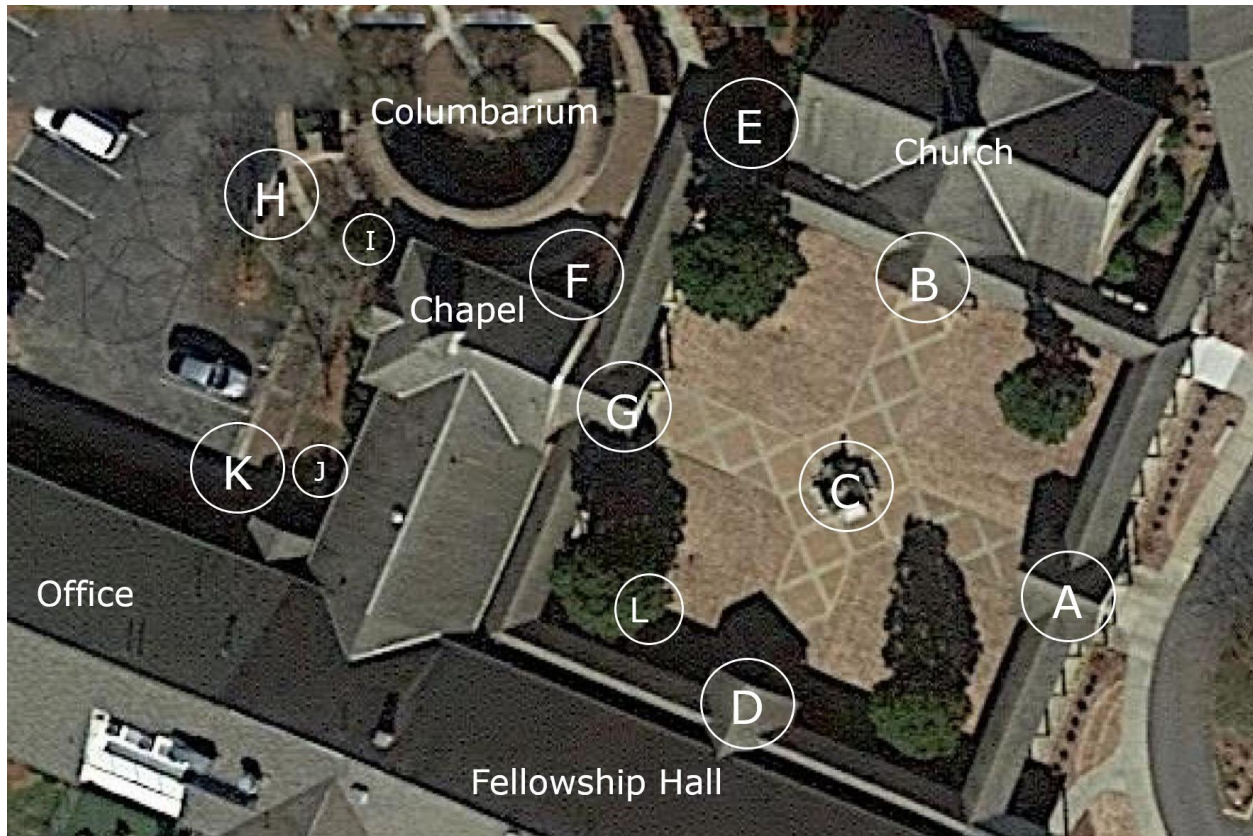


## Watering Flowers and Plants



There are two signups for watering the flowers and plants at St. Andrew. One is for the large planters in the columbarium and one is for the flowers in the main courtyard and the back office parking area. Contact Chris Brawn ([garden@saintandrew.org](mailto:garden@saintandrew.org)) for signup access.

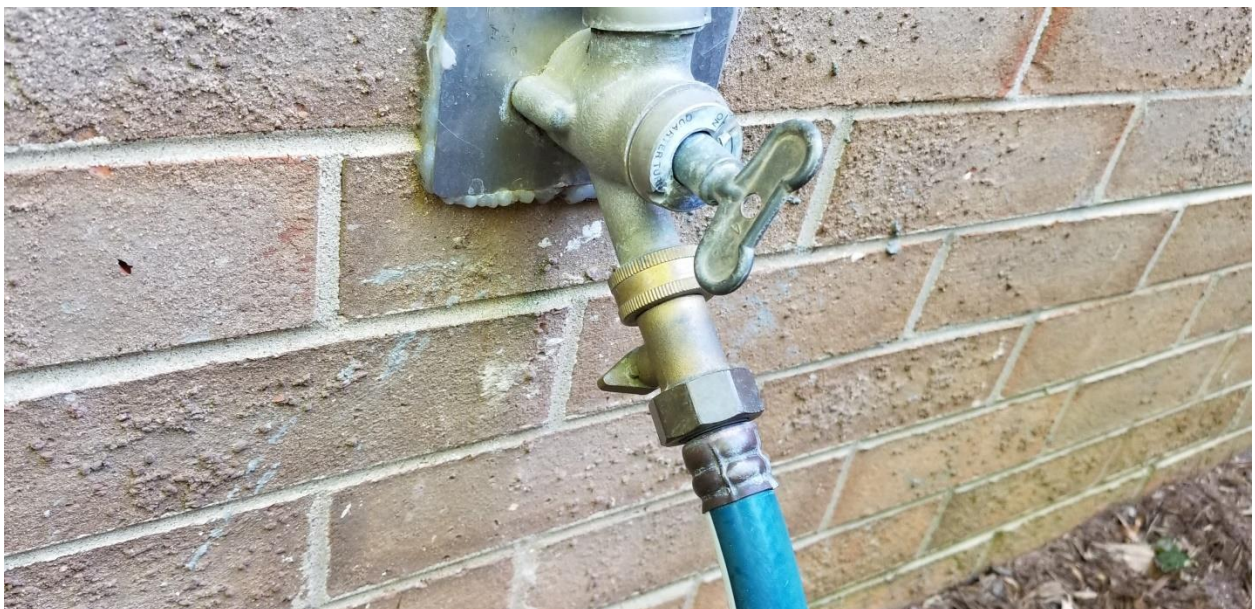
In the summer water the planters until the water runs out the bottom of the planter through the drainage holes – this is the best way to make sure the planters are thoroughly soaked. In the winter, because freezing temperatures can cause the hoses and ceramic planters to crack, use just enough water to get the top layers wet (about half as long as it takes to soak the pots). If the temperatures are at or below freezing, do not do your assigned watering.

There are two hoses that can be used for watering, located at “E” and “J” in the photo above. Both hoses have spray nozzles attached that can be used to turn the water on and off, and to adjust the amount of water coming out.

The hose at “J” also has two levers that control the water flow at the faucet. In order to get the max water from the hose, you want the levers to look like this:



To turn off the water, the bottom lever should look like this:



The spray nozzles are changed often (because they break often), but generally they have a bar that you push up or down to turn the water on or off, and somewhere in-the-middle will be less water pressure (use this when watering the

smaller flower planters so they don't overflow before getting thoroughly soaked). There are multiple settings for the spray nozzles – I prefer the “shower” settings, but use whatever you like the best. Avoid any settings that are too forceful as you can blast a hole in a plant leaf pretty easily with those!

There is also a faucet extender located at “L” that can be used to fill a watering can or bucket. This can be handy for watering in the winter to prevent overwatering, and to prevent water in the hoses from freezing. Usually 2 gallons (the size of a standard watering can) per flower pot is sufficient

It can be hard to determine if you need to water depending on how much rain we've received. Please use your best judgement. If it rains the day you are scheduled to water, or if it rained heavily the day before, you probably don't have to water the columbarium planters or the exposed flowers. However, unless it's raining sideways, the planters in the main courtyard will not get very wet, and will need to be watered (especially in the summer). The two smaller planters at “A” never get wet from the rain, so they will still need to be watered no matter what. This is when a watering can or bucket will save you from having to drag the hose out!

Also, do not NOT water based on weather predictions of rain. If you don't water and it doesn't rain (or doesn't rain enough) then the plants have to wait twice as long for the next watering. If there's a 100% chance of rain, then it's probably safe to skip it, but if it's only a 30% chance, then it's better to water than not.

When watering the planters, try to move the spray nozzle all around the surface – don't just put the nozzle in one spot and let it go until the water runs out the bottom. The plants on the other side of the planter won't get much of that! Also, try to water the soil or mulch, not the foliage of the plants. We want to get the water to the roots of the plants. And wet foliage can lead to diseases and sunburn.

## Watering the Columbarium Planters

There are nine planters in the columbarium that need watering, especially in the hot summer months. There are three very large planters with crepe myrtle trees and six large planters with vines. These planters have very large root systems, which doesn't leave a lot of room for potting soil to hold the moisture in, so they can dry out very quickly. Some of the vine planters will drain very quickly, so plan to water them for another minute after the water starts flowing out the bottom. It can take a long time for the water to run out the bottom of the crepe myrtle planters – plan to water each one for at least five minutes. Total watering time is around 45 minutes. If it rains on your assigned watering day, or if it rained heavily the day before, you do not have to water, as the planters are exposed to the open.

When watering these planters, you can use either hose “E” or “J” – they both will reach. I don't recommend using a watering can or bucket for these planters – it would take too many trips to get the job done!

## Watering the Other Planters

Referring to the photo, there are watering locations from “A” to “K”:

- A – two large planters and two small planters
- B – two large planters
- C – four sections of the St. Francis Statue area with flowers
- D – two large planters
- E – flowers in a white planter plus some in front of the planter
- F – flowers in the ground next to the chapel
- G – two large planters
- H – two planters near the parking lot
- I – one planter under the tree
- J – one planter hiding against the back wall behind the patio furniture
- K – two planters near the doors

It sounds like a lot, but it can all be done in about an hour (even quicker in the winter). Use hose “E” for sections A-G and hose “J” for H-K. If it rained that day or heavily the day before, you only have to water A, B, D, and G. “A” especially – there are two small planters that do not get any rain, and will dry out quickly. These two planters also tend to overflow if watered on full water pressure, so adjust the spray nozzle to a lower setting to thoroughly soak the pots. When the water comes out the bottom drainage holes, you are done.

In the winter when it’s cold you can use a watering can or bucket, filling these from the faucet at “L”. Do not water the ceramic planters for very long (ie, don’t wait for the water to run out the bottom) as we don’t want the ceramic to crack if the water in it freezes (one of them already is cracked). Just make sure the top part of the planters is wet. Do not water if the temperatures are at or below freezing.

## Wildlife

Sometimes birds nest in (or under) the larger plants in planters in the main courtyard, so if you see birds fly out when you approach, be careful you don’t water a bird’s nest! Ants sometimes take up residence in the planters in front of the church, so keep an eye out in case they try to climb up the hose. Snakes and bees are also around the grounds depending on the time of year, so make sure to be alert (especially around the hoses).