

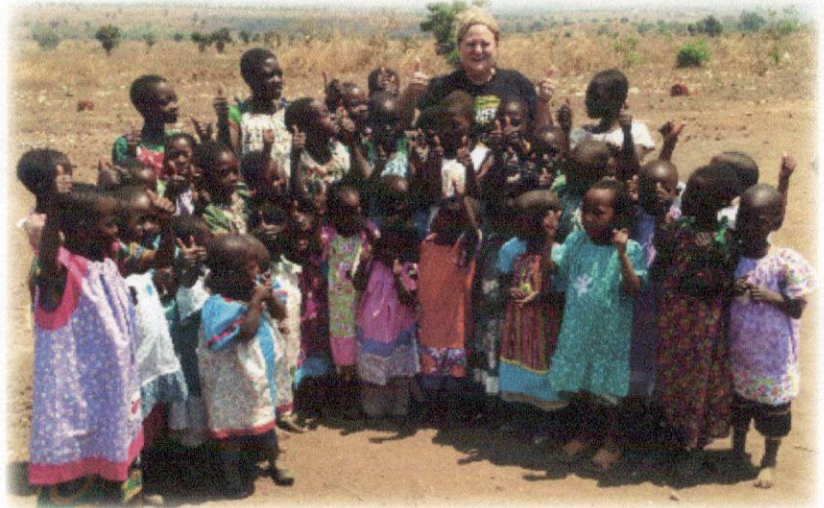
Little Dresses for Africa

Lillian's Dress

Designed by Geraldine Lowery

Lillian's dress is named for Lillian Weber, one of the many volunteers for Little Dresses for Africa, who has dedicated the biggest part of every day to making a little dress that will be a prized possession for a grateful little girl in Africa. Lillian turned 100 in May 2015, and reached her personal goal of sewing over 1000 little dresses!

If you would like to be involved, simply follow the instructions below to make little dresses for Africa. Mail the completed dresses to Little Dresses for Africa, c/o Nancy's Notions®, 333 Beichl Ave., Beaver Dam WI 53916-0683, and we'll ship the dresses to their destination. If you would like confirmation that your dresses have been received at Nancy's Notions, please enclose a self-addressed stamped postcard. For additional information go to littledressesforafrica.org/blog/



SUPPLIES (FOR ONE DRESS):

These supplies will make one size 6 dress—the size most often requested.

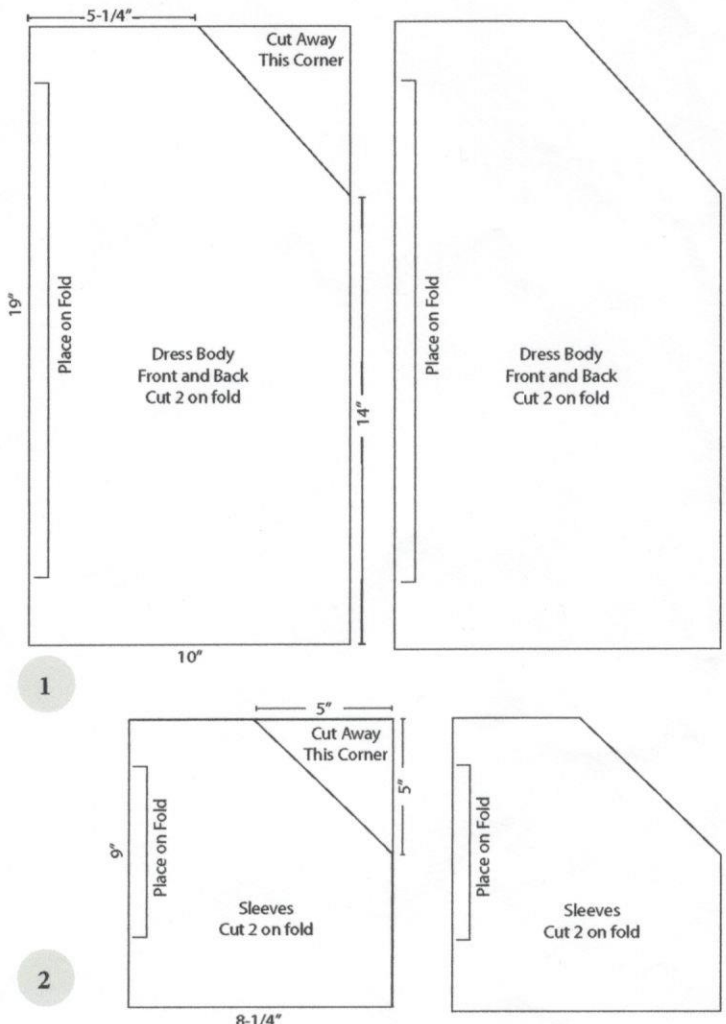
- 1¼ yd. 40" cotton fabric
OR (contrasting fabric as shown) use ⅝ yd. cotton fabric for dress body and ⅝ yd. cotton fabric for sleeves and ruffle
- 1 pkg. ½" ready made single fold coordinating bias tape
- 17" of ¼" elastic
- Coordinating all-purpose thread
- Optional: Fuse 'n Gather tape

INSTRUCTIONS:

Note: Use ¼" seams unless otherwise stated.

1. Prepare pattern.

- Dress Body (front and back):
 - Draw one 10" x 19" rectangle.
 - Mark the left (19") long edge "Place on fold."
 - Mark neck opening 5¼" from fold at top short edge.
 - Mark side seam 14" from bottom edge.
 - Connect markings, and add a ¼" seam allowance to the diagonal sleeve line.
 - Mark "Cut two on fold" on the Dress Body pattern. (1)
- Sleeve:
 - Draw an 8¼" x 9" rectangle.
 - Mark left 9" edge "Place on fold."
 - Mark top edge and side edge (opposite fold) 5" from the corner.
 - Connect markings, and add a ¼" seam allowance to the diagonal line.
 - Mark "Cut two on fold" on the Sleeve pattern. (2)
- Ruffle:
 - Draw a 5" x 10" rectangle.
 - Mark one 5" edge "Place on fold."
 - Mark "Cut two on fold" on the Ruffle pattern. (3)



2. Prepare fabric.
 - Fold selvages of fabric to the center of the fabric on each side. (4)
 - Fold the fabric in half lengthwise meeting the folded edges. (5)
3. Cut patterns from fabric.
 - Cut two of each pattern piece by placing the patterns on the **double-folded edge** of the fabric.
 - Place the ruffle pattern on the **double-folded edge** of the fabric **twice**, cutting a total of 4 ruffle sections. (6)
4. Press a $\frac{3}{4}$ " hem in each sleeve. Open hem and press edge to the hemline (about $\frac{3}{8}$ "). This process will make hemming easier later.
5. Stitch the sleeves to the front and back starting $\frac{1}{4}$ " in from the neck opening, and stop stitching $\frac{1}{4}$ " from the armhole edges. Press seams open.
6. Stitch bias tape around neckline opening to form casing for elastic.
 - Open out folded edge on one side of bias.
 - Turn and press under the short edge at beginning of bias tape $\frac{1}{4}$ ", toward the wrong side.
 - Start at center back, and place raw edge of bias at raw edge of neckline, right sides together. Stitch to neckline.
 - Stop stitching a few inches from the beginning edge of the bias. Trim excess length, leaving enough to turn under $\frac{1}{4}$ " and meet the beginning and ending edges of the bias. (7)
 - Complete stitching the bias. Press bias to the wrong side of the neckline and topstitch in position to form the casing. (8)
7. Stitch front and back together at side seams. Finish seams if desired. Press seams open.
8. Hem sleeves.
 - Fold up prepressed hems to wrong sides of sleeves.
 - Topstitch hems into position.
9. Complete elastic casing at neckline.
 - Thread $\frac{1}{4}$ " elastic through the neckline casing at the opening in the back of the casing.
 - Stitch elastic ends together. Ease neckline gathers evenly around the neckline.
10. Complete the ruffle.
 - Stitch the ruffle ends to make a complete circle. Press seams open.
 - Hem the lower edge by turning up a double-folded $\frac{1}{4}$ " hem; press. Edgestitch.
 - Divide the ruffle into quarters, placing a pin to mark each quarter.
 - Set the machine for a stitch length of 4 or 5.
 - Stitch a $\frac{1}{8}$ " from the edge of the fabric, being careful when stitching over the pins. Do not backstitch and make sure to leave long tails at the beginning and end. Repeat this step with a second line of stitching.
 - Grab the top threads and gently pull gathering the fabric.
 - Divide the bottom of the dress into quarters and marking with pins.
11. Join the top of the ruffle to bottom of the dress, right sides together, matching pins and adjust gathers to fit. Stitch the ruffle in place, using a $\frac{1}{2}$ " - $\frac{5}{8}$ " seam. Press the ruffle seam towards the dress and topstitch in place.

